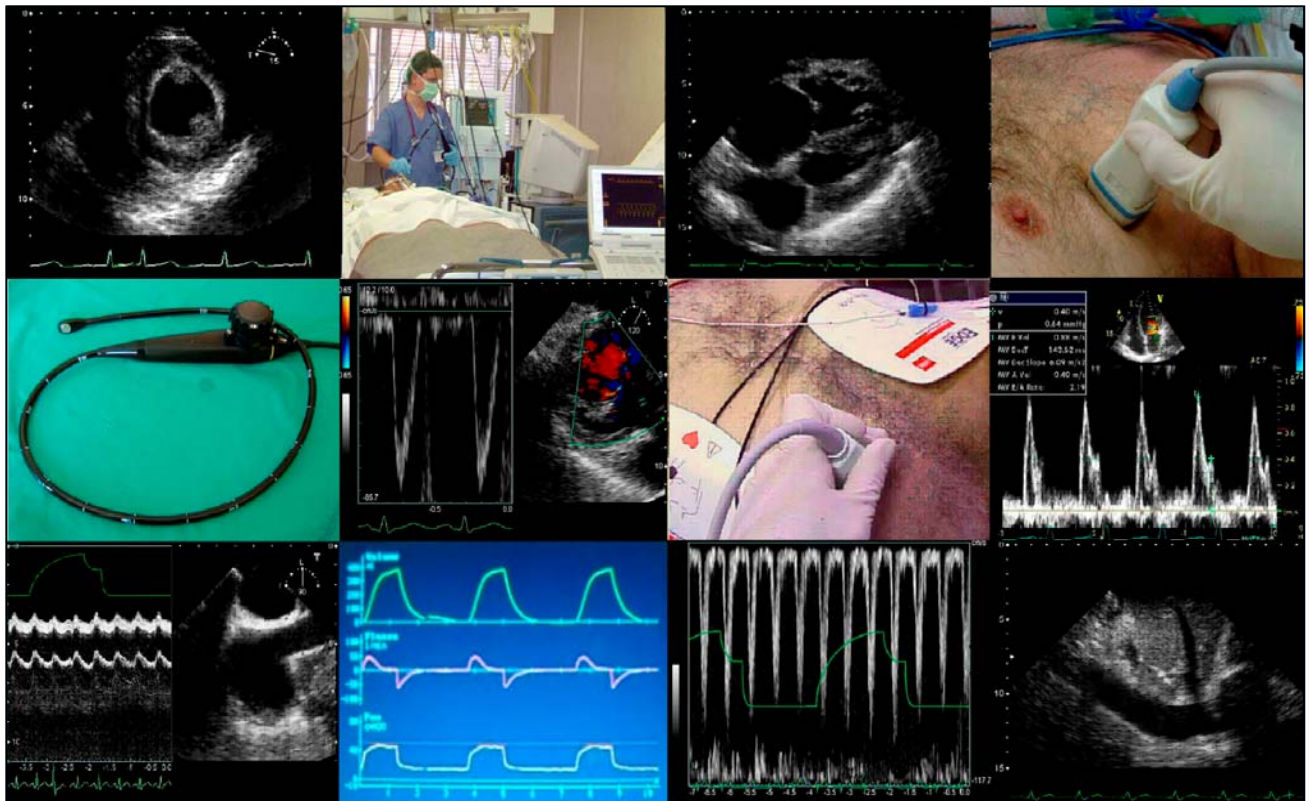
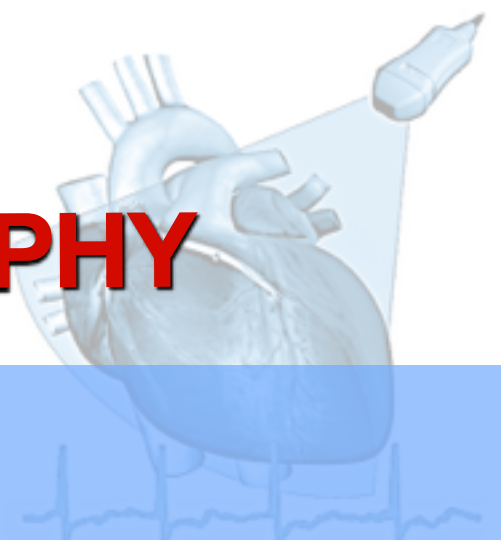


WINFOCUS'

CRITICAL CARE ECHOCARDIOGRAPHY



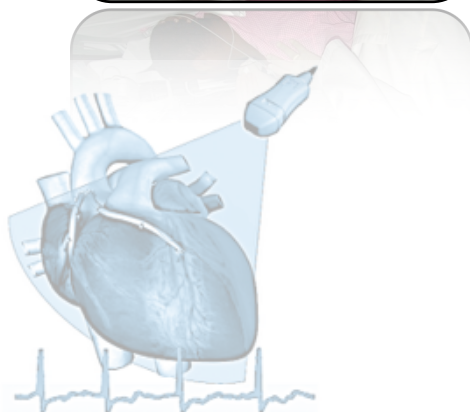
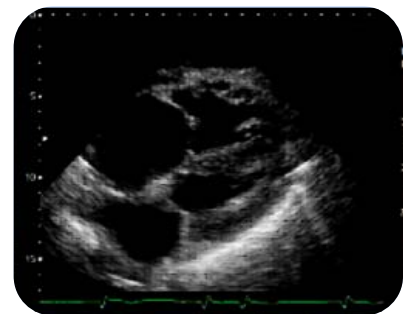
BASIC ECHO - Focused Cardiac Ultrasound

An International Course for Emergency, Intensive and Critical Care physicians designed and organized by the WINFOCUS ECHO-Group



A course on Echocardiography specifically designed for Intensive, Critical Care and Emergency Physicians, The WF BASIC ECHO - FOCUSED CARDIAC ULTRASOUND Course is targeted at physicians who are new to Echocardiography, and covers the use of Transthoracic Echocardiography (TTE) in the setting of cardiac arrest/peri-resuscitation, and as a screening tool for the unstable patient in the ICU/emergency. This module on basic Echo includes the internationally well-known formats of FEEL (Focused Echocardiography Evaluation in Life support) and FATE (Focused Assessment with Transthoracic Echocardiography), and might also be of interest to more Echo-experienced intensivists or cardiologists wishing to make their focused Echo assessment of the critical patient more effective.

The faculty gathers renowned experts in the use of and training in Echocardiography in ICU, and provides participants with a remarkable amount of practical teaching, simulation and interactive cases.



Online application:
<http://www.hkcem.com/html/courses/usg/>

Enquiry:
enquiry@hkcem.org.hk

Tel: (852) 28718877



WF BASIC ECHO (WBE)

Focused Cardiac Ultrasound



Mar 23/25

BASICS & APPROACH TO CARDIAC ARREST

8.30 *Registration, Pre-Test*

9.00 **Welcome, course instructions**

9.10 **Focused Cardiac Ultrasound in Critical Care: aims and place in echocardiography training**

9.25 **Basic TTE views & eyeballing principles**

9.50 *Coffee*

10.10 **Basic assessment of LV function**

10.30 **Basic assessment of RV function**

10:50 **Basic assessment of volume status**

11:10 **Basic assessment of tamponade**

11:30 **Focused Cardiac Ultrasound in cardiac arrest**

11:50 *Lunch*

13:00 **HANDS ON TRAINING (HOT 1): Basic TTE views, Laptop training, TTE simulators** 8 WORKSTATIONS with healthy models, tutorial laptops

15:00 *Coffee*

15.20 **HANDS ON TRAINING (HOT 2): TTE views wrap up, ALS Megacode, Laptop training, Shock Megacode, TTE simulators**
8 WORKSTATIONS with healthy models, tutorial laptops, ACLS mannequins

17.20 *End of first day*

Mar 24/26 **APPROACH TO SHOCK**

- 9.00 **Basic valves assessment**
- 9.25 **Lung ultrasound in cardiac arrest & shock: pneumothorax, “wet lung”**
- 9.50 **Basic 2-D Echo knobology**
- 10.10 **Approach to shock**
- 10.40 **Pitfalls and limitations of focused echocardiography**
- 11.05 *Coffee*
- 11.25 **Implementation and organization of a Critical Care Echo program**
- 11.40 **The WINFOCUS Basic Echo certification pathway**

- 11.50 **INTERACTIVE CASE SESSION**

- 13.15 *Lunch*

- 14.30 **HOT 3: Lung Ultrasound, Wrap up on TTE views, Shock Megacode**

- 16.30 *Final Test*
- 17.00 *End of Course & Certificate distribution*

